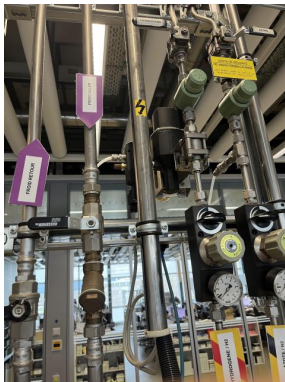


## SOLO 322 10 100

**Kind : Oven - Furnace**  
**Manufacturer : SOLO**  
**Model : 322 10 100**  
**Year : 2008**  
**Serial : 9049**  
**Stock : 10514**



- 1 entrance frame with loading bay and entrance channel
- 1 heated section with : -> 2 heating zones
- > light ceramic fiber insulation
- > heater candles on top
- > one heating channel
- > conveyor belt drive element
- 1 cooled section with : -> a frame
- > cooling channel with water jacket
- 1 outlet frame with unloading area and outlet chimney
- 1 3-part conveyor
- 1 gas distribution cabinet
- 1 electrical cabinet

### TECHNICAL DETAILS

- Belt width : 100 [mm]
- Max. loading height : 50 [mm]
- Max. temperature : 1150 [°C]
- Adjustable belt speed : 5 - 100 [cm/min]
- Max. belt load : 3 [kg/m] at 800 [°C] / 1.2 [kg/m] at 1100 [°C]
- Heating length : 1000 [mm]
- Cooling length : 1800 [mm]
- Shielding gas : Nitrogen / Dihydrogen

**Kind : Oven - Furnace**

**Manufacturer : SOLO**

**Model : 322 10 100**

**Year : 2008**

**Serial : 9049**

**Stock : 10514**

- Shielding gas flow rate	: 2 [Nm3/h]
- Purge gas	: Nitrogen
- Purge flow rate	: 1.8 [Nm3/h]
POWER SUPPLY	
- Supply voltage	: 400 [V]
- Installed power	: 11.5 [kW]